

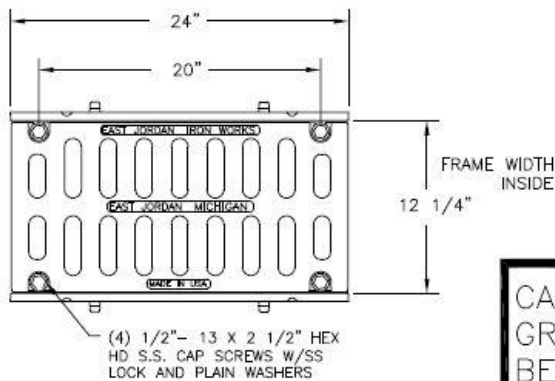
1-877-903-7246



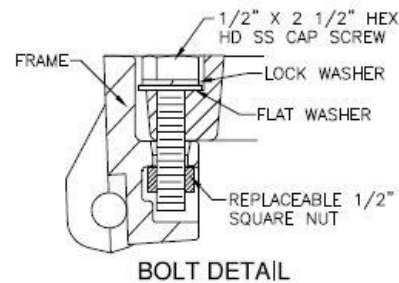
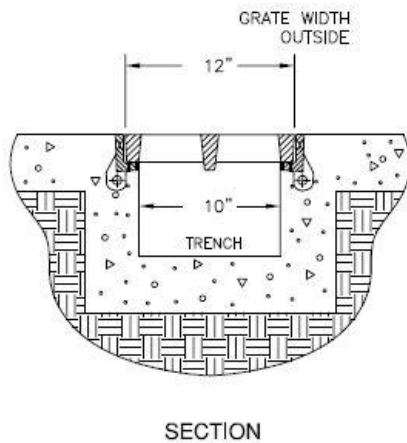
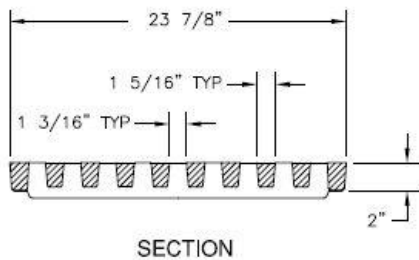
www.trenchdrainsupply.com

<p>Number</p> <p>6903-Bolted</p>	<p>Series</p> <p>6900 Series</p> <p>Airport Trench Grate and Frame Bolted</p> <p>Extra Heavy Duty</p>
--	---

6900 6903 Assembly



CAUTION: DO NOT DISASSEMBLE BOLTED GRATES AND CHECK FRAME WIDTH INSIDE BEFORE SETTING SECTIONS IN CONCRETE.



Specification

Grate Material : Ductile Iron (70-50-05)
Design Load: Extra Heavy Duty
Open Area: 80 SQ IN
Coating: Undipped
Certification: ASTM A48 ASTM A536
Country of Origin: USA

Manufacturer



DISCLAIMER - The customer and the customer's architects, engineers, consultants, and other professionals are completely responsible for the selection installation and maintenance of any product purchased from Trench Drain Supply and/or its manufacturers. TRENCH DRAIN SUPPLY MAKES NO WARRANTY, EXPRESS OR IMPLIED, AS TO THE SUITABILITY, DESIGN, MERCHANTABILITY, OR FITNESS OF THE PRODUCT FOR CUSTOMERS APPLICATION. The drawing and information provided remain the property and copyright of the manufacturer listed. The manufacturer reserves the right to modify specification without notice.